

ARE YOU THE PRIMARY CAREGIVER FOR A YOUNG PERSON (AGED 13-19) WITH A DIAGNOSED EATING DISORDER IN THE UK?

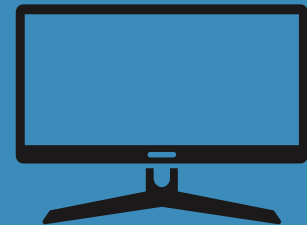
We know how difficult it can be to care for a young person with an eating disorder. We are interested in how you respond to yours and your child's emotions.

We hope this research may contribute to developing new interventions for young people with eating disorders and their families.



If you want to participate, you will be asked to fill out an online questionnaire that will take up to 30 minutes to complete.

As a thank you, you can opt into a prize draw to win one of four £50 gift vouchers.



Please visit <https://research.sc/participant/login/dynamic/B337D971-FB60-4AF2-AF88-FDD55DAC03F6> or scan the QR code to find out more information.

You can contact the primary researcher, Lizzie Neely, trainee clinical psychologist, on l.neely235@canterbury.ac.uk

